

# MOUNTAIN LIVING<sup>®</sup>

HOMES THAT  
CELEBRATE  
SUMMER

MOUNTAIN LIVING<sup>®</sup> Bringing the Spirit of the High Country Home

JULY 2016

A WarnerMedia Publication

July 2016  
mountainliving.com

FARM-TO-FORK FUN The best agritourism adventures in the West

A long covered bridge leads to the entrance of this waterfront home at the Golf Club at Black Rock. The homeowners commissioned Spokane craftsman Neil Malam to create the sculpture of interlocking rings. OPPOSITE: A textural Favela armchair by Edra and a round Petalon side table from The Bright Group make for a striking arrangement in the home's foyer; the painting is from homeowners Rodney and Kathy Woods' extensive Western art collection.



## A BROAD PERSPECTIVE

A CONTEMPORARY HOME'S DRAMATIC ARCHITECTURE, FURNISHINGS AND LANDSCAPING CELEBRATE EXTRAORDINARY VIEWS OF IDAHO'S LAKE COEUR D'ALENE



STORY BY ELIZA CROSS PHOTOGRAPHY BY GIBEON PHOTOGRAPHY



The great room's retractable glass doors can be completely opened to maximize the stunning views of Lake Coeur d'Alene. OPPOSITE, FROM TOP: Interior designer Chandra Payne specified low-profile furniture to preserve the line of sight to the water; the Christian Liaigre Merlin chair and custom Augustin sectional are covered in Great Plains alpaca from George Cameron Nash. The adjacent southeast-facing patio features a custom stainless-steel fire pit created by residential designer Eric Hedlund.

RESIDENTIAL DESIGN BY **ERIC HEDLUND DESIGN**  
 INTERIOR DESIGN BY **CPAYNE INTERIORS** CONSTRUCTION BY **GUNDER CONSTRUCTION**



**"I JUST COULDN'T TAKE MY EYES OFF THE LAKE,"**

Kathy Woods recalls of the first summer she and her husband Rodney spent at their new Coeur d'Alene home at the Golf Club at Black Rock. "I would sit in the great room or out on the patio for hours, mesmerized by the view."

The couple tasked Coeur d'Alene residential designer Eric Hedlund with creating a warm, modern retreat worthy of the setting—including plenty of space to accommodate visiting family and friends. Hedlund delivered a single-level home that takes full advantage of its lakeside environment while maintaining a relatively low profile on the wooded terrain. "We didn't have height restrictions, but we all agreed that we didn't want the house to feel too tall," Hedlund explains.

The home's exterior is clad in a striking combination of Telluride stone, zinc panels and Trespa zebra wood siding with teak soffits. The 7,766-square-foot, three-bedroom design features two guest suites, a professional-grade kitchen, fitness room and dedicated home offices for both Rodney and Kathy. The master suite is accessed by a dramatic glass bridge that crosses one of the narrow, rectangular reflecting pools surrounding the house. A separate 2,200-square-foot guesthouse features a bunkroom, great room and full kitchen for the couple's eight grandchildren. >>



RIGHT: Gently curved custom Capri dining chairs from George Cameron surround a clean-lined square table in the dining room. The oversized Pierre ou Paul pendant light is by Ingo Maurer. BELOW: Deep overhangs shade the interior of the home and minimize glare. Riverview Landscape Company created the home's terrace gardens, and the grass on the lake side of the house is low-maintenance artificial turf. OPPOSITE: The sleek kitchen features Miss B stools by Pierantonio Bonacina, and Neidhardt glass pendant lights from Scott + Cooner.



Dallas designer Chandra Payne created the home's restrained interiors, beginning with a palette of teak ceilings and accent walls of the same Telluride stone used on the structure's exterior. "Just as you find big boulders and delicate flowers in nature, I like spaces that are balanced—not too masculine, not too feminine; not all heavy and not all light," she explains. "Stone can sometimes feel cold and hard, so we created balance with cozy, warm fabrics and a blend of modern and vintage pieces."

For the home's 40-foot-wide living area, Payne chose streamlined, low-profile furnishings: a red Open Borders rug by Holly Hunt, generously proportioned Christian Liaigre chairs and a custom sectional covered with soft, cream-colored alpaca. "At no time did we want to distract from the views," she says.

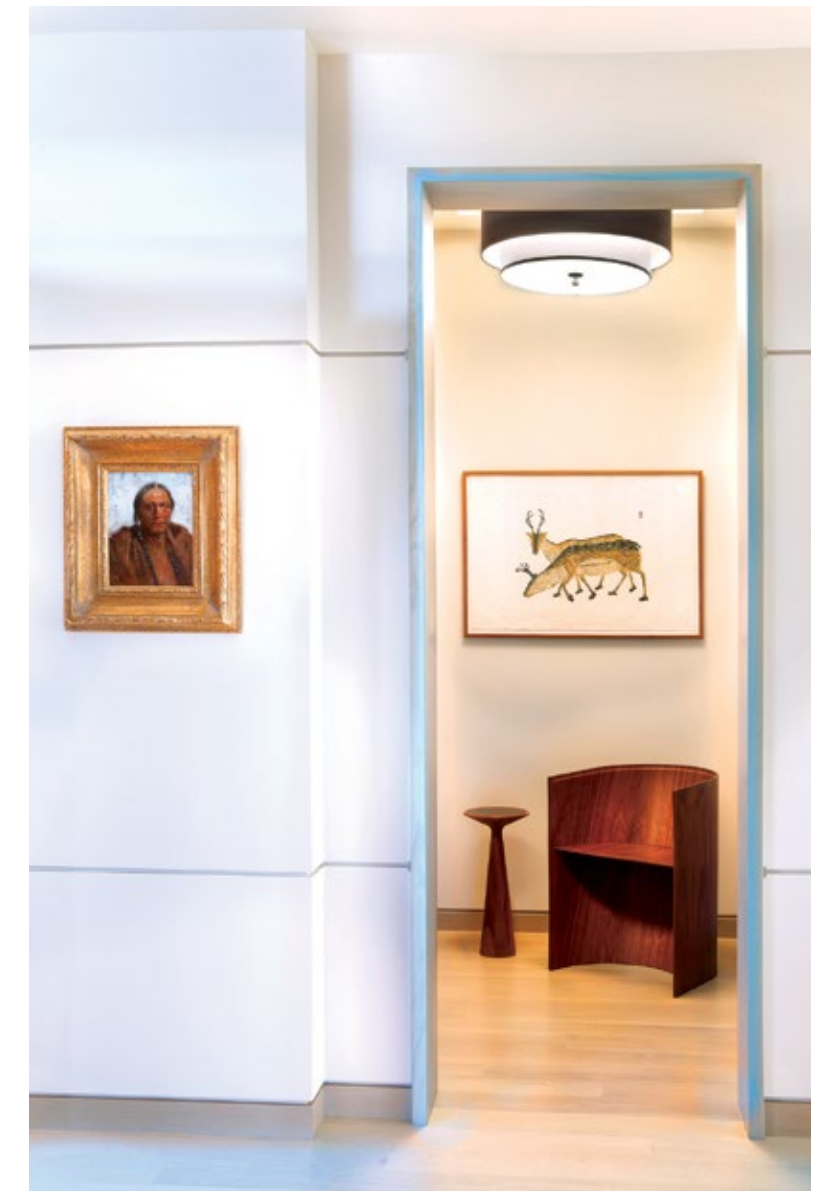
The home's minimalist interiors showcase a number of pieces from the homeowners' extensive art collection, including landscapes, Native American paintings and a massive petrified-tree sculpture displayed at the end of a light-filled hallway. "We discovered that our Western art is better viewed in this very contemporary setting," Rodney says. >>



TO MAXIMIZE VIEWS OF THE LAKE AND MOUNTAIN SKIES THAT CHANGE BY THE HOUR, Hedlund specified stainless-steel-flanged windows by Hope's Windows, which are strong enough to accommodate large panes of glass. In the great room, retractable glass doors open wide, connecting the living area to the adjacent patio. "We wanted to completely engage the outdoors," says Payne, who chose sturdy Janus et Cie sectionals and Sutherland teak lounge chairs for the outdoor space.

Hedlund designed the patio's five stainless-steel fire pits, which allow the Woods family to enjoy the outdoors even on chilly evenings. "Idaho's climate is dry and we don't have a lot of bugs, so it's really comfortable relaxing on the terrace with a fire and seeing the reflections from the wading pool and the lake beyond," he says. Riverview Landscape Company installed native trees, shrubs and hardy plants in a series of gardens and terraces that cascade down the hill from the house.

At a moderate elevation of 2,200 feet above sea level, the lake warms to a comfortable temperature in the summer. "When we're here, we swim, fish and sail, and it's an uncluttered kind of life," says Rodney, who shares his wife's reverence for the ever-changing artistry of the environment. "Sometimes, though, we love to just sit and watch storm clouds gathering over the lake. Even in the rain, this is a beautiful place to be." ○



OPPOSITE: An expanse of Hope's rolled-steel windows floods the foyer with natural light; the ceilings are inlaid with teak. The custom slate-topped Washington Park console table is from David Sutherland Showrooms. ABOVE: A curved barrel chair and sculptural side table provide contemporary contrast to paintings from the Woods' private collection. LEFT: 60,000 square feet of colorful Telluride Greystone was used in the construction of the home.

RIGHT: Payne specified a palette of warm browns and tans for the powder room, which features a Waterworks Opus double washstand and boldly patterned Waterworks Aballe Grande marble mosaic floor tile.

BELOW: The Trespa zebra-wood-patterned exterior siding is accented by zinc parapets.

OPPOSITE: The home's water-front location influenced Hedlund's design for a glass bridge connecting the master suite to the main house. The shallow reflecting pond running beneath the transparent bridge can be illuminated at night.



## LAKESIDE LIVING

Residential designer Eric Hedlund shares the strategies the design team employed to strengthen this home's connection to the water:

**PRIME POSITION** To enhance the enjoyment of the outdoor spaces, Hedlund sited the home with the great room and adjoining terrace facing southeast. "The homeowners enjoy nice sun during the day but don't get beaten by it in the afternoon," he says.

**HORIZONTAL LINES** Rectangular reflecting pools, retaining walls and terraces visually link the property to the lake.

**DEEP OVERHANGS** Generous eaves provide shade, minimize glare inside the home and keep the interiors naturally cool in the summer.

**EXPANSIVE GLASS** Hedlund specified broad windows to showcase the views in the home's living areas. Corner window systems provide expanded 210-degree views of the surroundings.

**GROUNDLED SPACES** Interior designer Chandra Payne eschewed high-back chairs and tall cabinets in favor of low-profile furnishings that preserve the line of sight to the lake.

"I FELT STRONGLY ABOUT KEEPING THE DESIGN SIMPLE AND STRAIGHTFORWARD."

HOMEOWNER *KATHY WOODS*

